

Directions to the Aon Center Parking Garage

The Garage entrance is located on Lower Lake Street (Actually Middle Level) and is easily accessible from Columbus Drive.

For a better 3-D visual see the maps on Wikipedia

http://en.wikipedia.org/wiki/Multilevel_streets_in_Chicago

http://en.wikipedia.org/wiki/File:Chicago_top_down_view.png

Parking Information – Imperial Parking (U.S.) (312) 861-0969

\$6.00 Flat Rate (Effective Feb. 1, 2009)

*Parking In between 3pm to 6pm Out by 8am
or \$13.00 Flat Rate Parking After 6pm and Out by 8a m

From the North:

Take Lake Shore Drive South to Randolph Drive Exit (turn right). Drive west 2 blocks to Columbus Drive. At stop light, turn right and immediately merge into the left lane. Drive one block to Lake Street and turn left at the stop light. Drive ½ block, entrance to the garage is located on the left side of Lake Street. The parking garage entrance sign will read Aon Parking Garage.

From the South:

Take Lake Shore Drive North to Randolph Drive (turn left.) Drive west 2 blocks to Columbus Drive and turn right at stop light. Immediately merge into the left lane. Drive one block to Lake Street and turn left at stop light. Drive ½ block, entrance to the parking garage is located on the left side of Lake Street. The parking garage entrance sign will read Aon Parking Garage.

From the West (I 90/I 94 – Dan Ryan/O’Hare Airport):

As you head towards Downtown Chicago, exit at Ohio Street heading East past Michigan Avenue to Fairbanks/Columbus Drive. Turn right at Fairbanks and head southbound crossing over the Chicago River to 2nd stop light at Lake Street. At Lake Street, turn right and drive ½ block, entrance to the parking garage is located on the left side of Lake Street. The parking garage entrance sign will read Aon Parking Garage.

From the West (I 290 – Eisenhower):

Take the Congress Parkway heading East (going towards the Lake) to Columbus Drive. Turn left at the stop light and drive about 1½ miles (1 block past Randolph Drive) to Lake Street and turn left at the stop light. Drive ½ block, entrance to the parking garage is located on the left side of Lake Street. The parking garage entrance sign will read Aon Parking Garage.

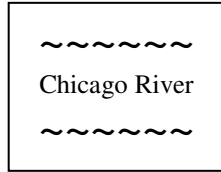
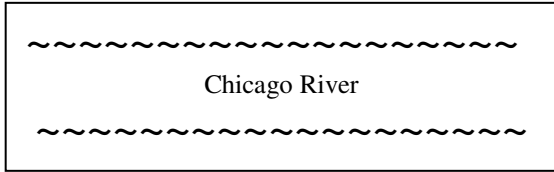
Michigan Avenue (From the North):

Take Michigan Avenue to Ohio Street. At the stop light, turn left heading East to Fairbanks/Columbus Drive. Turn right at Fairbanks and head southbound crossing over the Chicago River to 2nd stop light at Lake Street. At Lake Street, turn right and drive ½ block, entrance to the parking garage is located on the left side of Lake Street. The parking garage entrance sign will read Aon Parking Garage.

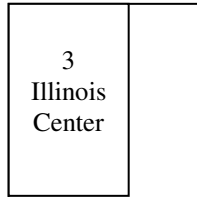
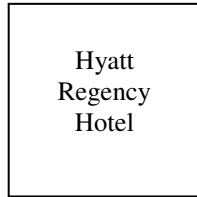
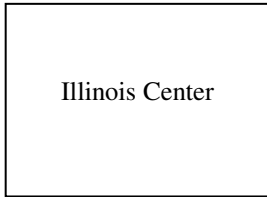
Michigan Avenue (From the South):

Take Michigan Avenue to Ohio Street. At the stop light, turn right heading East to Fairbanks/Columbus Drive. Turn right at Fairbanks and head southbound crossing over the Chicago River to 2nd stop light at Lake Street. At Lake Street, turn right and drive ½ block, entrance to the parking garage is located on the left side of Lake Street. The parking garage entrance sign will read Aon Parking Garage.

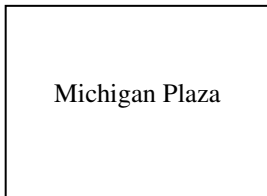
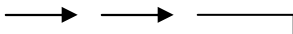
OHIO STREET



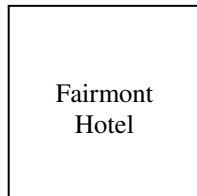
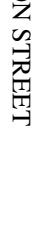
WACKER DRIVE



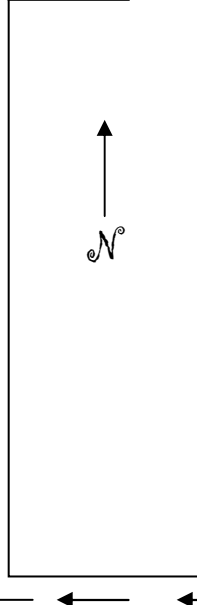
SOUTH WATER STREET



STETSON STREET



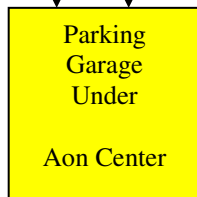
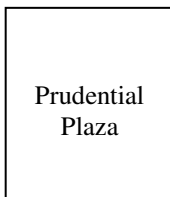
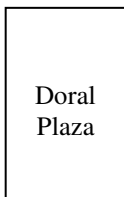
COLUMBUS DRIVE



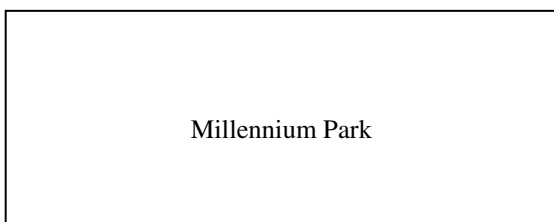
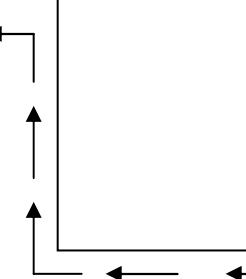
LAKE SHORE DRIVE



LAKE STREET



200 EAST
RANDOLPH
DRIVE



MICHIGAN AVENUE

